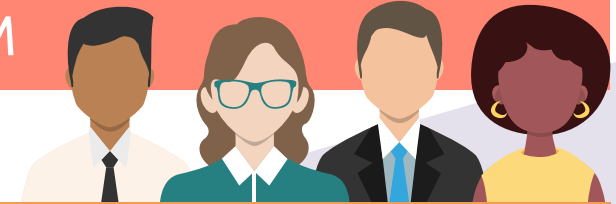


# CAREERS WALES AND YOUR SCHOOL



## MEET YOUR CAREERS WALES SCHOOL DELIVERY TEAM



### School Account Executive (Careers Adviser)

Supports your child in their career planning to help them make informed decisions. You'll also see our Careers Advisers at school parent evenings and school events.

Your school Careers Adviser is:

Name:

Mobile:

Email:

### Business Engagement Adviser (BEA)

Helps your school to engage with employers. This improves students' awareness of the labour market and increases their understanding of the world of work.

Your school BEA is:

Name:

Mobile:

Email:

### Careers and the World of Work Co-ordinator (CWoW)

Supports your school with their Careers and the World of Work curriculum. This includes working towards our Careers Wales Mark.

Your school Careers and the World of Work Co-ordinator is:

Name:

Mobile:

Email:

### Additional Learning Needs Careers Adviser (ALN Adviser)

Supports your child in their career planning to help them make informed decisions. You'll also see our Careers Advisers at school parent evenings and school events.

Your school ALN Adviser is:

Name:

Mobile:

Email:



[View our Changing Lives Service Offer - Partnership Agreement 2019-2020](#)  
This document summarises the range of services offered to schools for the coming year.

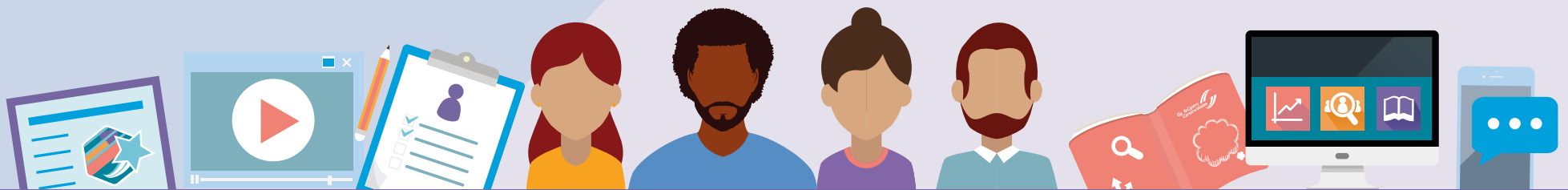
## ABOUT US

Careers Wales provides free and impartial careers information advice and guidance to support anyone making education or employment decisions.

We are here to help young people and adults make career plans and decisions, to move into the right training, further learning or employment opportunities.

Our services focus on supporting customers to develop self-awareness and aspirations to equip them to make effective career decisions throughout their lives.

Find out more [about Careers Wales](#).



### CONNECT WITH CAREERS WALES



[careerswales.gov.wales](https://careerswales.gov.wales)



[post@careerswales.gov.wales](mailto:post@careerswales.gov.wales)



0800 028 4844



Webchat



@CareersWales

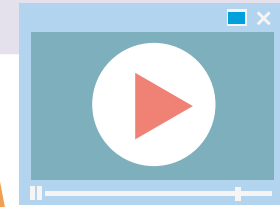
Our website is full of information, tools and resources to help you plan your career.



## Job Matching Quiz

Find job ideas that match your skills and interests.

[www.careerswales.gov.wales/job-matching-quiz](http://www.careerswales.gov.wales/job-matching-quiz)



## Job Information

Search for information on 100's of different job titles, including wages and qualifications needed.

[www.careerswales.gov.wales/job-information](http://www.careerswales.gov.wales/job-information)



## Buzz Quiz

Take the Buzz Quiz to find out your personality type and what jobs might suit you.

[www.careerswales.gov.wales/buzzquiz](http://www.careerswales.gov.wales/buzzquiz)



## Apprenticeships

Search for Apprenticeships and other vacancies.



# FIND OUT MORE ABOUT...

## Choosing subjects and courses



How to choose the right subject or course



Choosing subjects in Year 8 and 9



Choosing subjects and courses at 16



Choosing subjects and courses at 18

## Your options



Options at 16



Options at 18

## Apprenticeships



Apprenticeships

## FIND OUT MORE ABOUT...

### Getting a job



Getting a Job



Getting into Self-employment

### CWTV - Careers Wales TV



View live and recorded webinars with employers from leading industries.

[tv.careerswales.gov.wales](http://tv.careerswales.gov.wales)

### Careers Wales You Tube Channel



Our YouTube channel includes a variety of videos covering topics such as:

- Your options
- Skills employers want
- Getting ready for the world of work and much more.....

### STEM Gogledd



[stemgogledd.cymru](http://stemgogledd.cymru)

Inspiring, promoting and supporting STEM education in Gwynedd, Anglesey and Conwy. STEM Gogledd is a joint project between Careers Wales and Gwynedd, Anglesey and Conwy County Councils.